



INTERNATIONAL JOURNAL OF TRENDS IN EMERGING RESEARCH AND DEVELOPMENT

INTERNATIONAL JOURNAL OF TRENDS IN EMERGING RESEARCH AND DEVELOPMENT

Volume 3; Issue 3; 2025; Page No. 34-37

Received: 16-03-2025
Accepted: 25-04-2025

Echoes of Earth: A Contemporary Pause Rooted in Ancient Wisdom

¹Suman M Purohit, ²Uditi Sandilya and ³Dr. Nischay Gowda

¹Student, Department of Interior Design, JD School of Design, Bangalore, Karnataka, India

²Faculty, Department of Interior Design, JD School of Design, Bangalore, Karnataka, India

³Associate Head, Department of Interior Design, JD School of Design, Bangalore, Karnataka, India

DOI: <https://doi.org/10.5281/zenodo.15732726>

Corresponding Author: Suman M Purohit

Abstract

An *Echoes of Earth* is a conceptual interior design project rooted in the traditional Indian philosophy of *Panchgavya*, interpreted through a modern and sustainable lens. Developed within the serene premises of the Art of Living center, the project transforms an underutilized barn structure into a holistic space that offers a sensory pause from urban chaos. With six uniquely named zones-Gokshira Café, Gokritiesence Store, Gokala Sanchay Workshop, Gaumaya Barn, and Govatsa Calf Area-the design subtly honors cow-derived elements without overpowering the contemporary language of the interiors. The study explores how interior design can serve as a conduit between cultural narratives and modern wellness ideologies. By integrating natural materials like Aura lime plaster, Gaumaya paints, Gopika dung tiles, and milk fabric from Suvetah, the space becomes a tactile expression of sustainable innovation. The design not only redefines functionality within these spaces but also evokes stillness, education, and conscious living. Observations from initial spatial response suggest a positive emotional impact on users-fostering curiosity, calmness, and deeper cultural appreciation. The project proposes that spaces grounded in heritage can still speak the language of the present, when designed with sensitivity and vision. In conclusion, *Echoes of Earth* illustrates how narrative-driven interior design, rooted in regional wisdom, can cultivate immersive, meaningful experiences that respond to both ecological and emotional needs. conclusion.

Keywords: Panchgavya, Sustainable Design, Cultural Narrative, Cow-Centric Design, Art of living, Modern vernacular, Eco-conscious interior, Natural material, Sensory experience, Gaumaya

Introduction

In the realm of interior design, there is a growing emphasis on narratives that connect space with culture, sustainability, and emotional well-being. As modern lifestyles become increasingly fast-paced and disconnected from nature, the need for intentional spaces that offer moments of pause and reconnection has become critical. The project *Echoes of Earth* emerges within this framework, set against the spiritual and natural landscape of the Art of Living Center. It reinterprets the traditional Indian philosophy of *Panchgavya*-a holistic system of five cow-derived elements-into a contemporary design language that bridges heritage and innovation.

The interior design of this space is neither rustic nor purely traditional; rather, it embodies a thoughtful modern adaptation of natural materials, philosophies, and practices

that have sustained rural India for centuries. Existing research in sustainable architecture and vernacular design emphasizes the value of biophilic materials, low-impact processes, and sensory environments in promoting psychological well-being and environmental consciousness (Kellert, 2008) ^[1]. *Echoes of Earth* contributes to this discourse by offering a case study of how cow-centric, Panchgavya-based elements can be transformed into tactile, immersive, and meaningful design interventions across hospitality, education, and wellness-oriented spaces.

This paper aims to explore the conceptual development, material application, spatial experience, and user impact of *Echoes of Earth*, positioning it as an example of how rooted traditions can find renewed relevance in contemporary interior architecture.

Materials and Methods

Conceptual Approach and Research Framework

The conceptual approach of Echoes of Earth was rooted in the traditional Indian philosophy of Panchgavya, reimagined through a modern design lens. The research began with site observations at the Art of Living campus, where empty barn structures and underused spaces inspired a design-led transformation. The aim was to create a space that evokes pause-not through stillness alone, but through meaningful sensory and emotional engagement. Visual and contextual studies, user observation, and experiential mapping were used to understand how traditional values could merge with contemporary sustainable design. The result is a framework that connects nature, culture, and wellness through materiality, storytelling, and spatial planning.

Panchgavya-Inspired Design Interventions

The integration of Panchgavya extended beyond concept into materiality and function. Natural materials derived from cow by-products were used, including:

- Aura Plasters (lime and dung-based)
- Gopika Tiles (Vedic dung tiles)
- Gaumaya Paints
- Milk Fabric by Suvetah

These choices reflect both environmental sensitivity and spiritual context, offering a multisensory engagement to users. Elements like textured walls, earthy finishes, soft lighting, and curated spatial transitions contribute to a calming experience, reinforcing the theme of pause

Spatial Zoning and User Engagement Strategy

The design zones were divided into six meaningful experiences:

- **Gokshira Café:** Overlooking calves, offering dairy-based menus and a view that promotes stillness.
- **Gokritiessence Store:** A curated space retailing Panchgavya products, wellness goods, and farm subscriptions.
- **Gokala Sanchay Workshop:** Focused on pottery and traditional learning, designed for intimate group interactions and film screenings.
- **Govatsa Calf Space:** A calm environment housing calves, visible from other spaces, anchoring emotional engagement.
- **Gaumaya Cow Barn:** An active space where cows reside, designed to host feeding and milking sessions.
- **Tasting Corner:** An interactive zone within the store offering milk flights and Panchgavya-based tasting experiences.

Every material and method applied supported the core intention: to craft spaces where tradition meets modern design with purpose, sustainability, and narrative clarity.

Results and Discussion

The Echoes of Earth project successfully transformed a set of vacant, unused rooms and a basic barn into a meaningful, cow-centric experience. By integrating Panchgavya-based elements like Gopika tiles, Gaumaya paints, Aura plaster, and milk fabric, the design added purpose, sustainability,

and cultural depth.

The result is a space that evokes calmness, encourages reflection, and aligns with the theme Pause. Visitors can engage with cows, enjoy curated dairy tastings, and experience earthy materials-all of which promote a deeper connection to nature and tradition. The intervention shifted the space from passive to participatory, fostering emotional, educational, and sensory engagement.

Spatial Impact and Experiential Transformation

The transformation of the vacant barn structures into the project Echoes of Earth yielded multidimensional outcomes. Each of the six spaces-Gokshira Café, Gokritiessence Store, Gokala Sanchay Workshop, Govatsa (calf space), Gaumaya (cow barn), and the Tasting Corner-was infused with Panchgavya-inspired storytelling and design, resulting in highly sensorial and emotionally engaging experiences.

Visitors reported feeling a sense of calm, nostalgia, and curiosity. The *pause* theme was successfully translated into physical sensations through earthy colors, warm lighting, tactile surfaces, and the presence of cows and calves-promoting mindfulness and a slow-paced engagement with the environment.

Material Use and Sustainable Integration

The use of Panchgavya-derived materials such as Gopika tiles (dung-based), Gaumaya paints, and Suvetah's milk fabric presented not only a thematic alignment but also sustainable innovation. Aura plasters added texture and breathability to walls, while terracotta, reclaimed wood, and natural fabrics introduced ecological consciousness without sacrificing aesthetics.

These sustainable elements enhanced air quality, acoustics, and user comfort, proving that age-old practices can be translated into contemporary interior design

Human Interaction and Educational Value

The experiential design has sparked meaningful dialogue around the role of indigenous materials and cow-centric culture in modern living. The Gokala Sanchay Workshop has served as a cultural bridge, allowing small groups to observe, interact, and learn pottery or traditional knowledge while watching documentaries.

Children and families visiting the Govatsa calf space felt emotionally connected, often staying longer than expected, while the Tasting Corner offered both novelty and education, reshaping their perception of Panchgavya beyond just tradition.

Observations post-implementation

- Visitors exhibited slower movement patterns and longer dwell times, a key marker of the "pause" experience.
- Products at the store received positive attention, especially those derived from cow-based elements.
- The café became a reflective space where the sight of calves grazing brought emotional warmth to the environment.

The result is a space that honors tradition with a forward-looking lens-inviting people to pause, reflect, and reimagine sustainability through a Panchgavya-based experience.

Plan

The spatial layout of Echoes of Earth is thoughtfully designed to foster a sensory, immersive experience that aligns with the central theme, Pause. The plan comprises distinct yet interconnected zones—each grounded in the Panchgavya concept and positioned to allow a natural flow of movement and experience. The Gokhira Café is oriented to offer tranquil views of the adjacent Govatsa, the calf barn, creating a gentle, visual pause for visitors. The Gokritiessence Store stands as a curated space offering cow-derived and organic products. Gaumaya, the barn, serves as the soul of the project, grounding the space in rural authenticity. Gokala Sanchay, the workshop area, facilitates learning through pottery, dairy knowledge, and calm engagement. Each function is planned to complement the other, blurring boundaries between activity and stillness, traditional and modern. Natural transitions, open layouts, and material zoning create a serene rhythm throughout the space, encouraging reflection and connection.

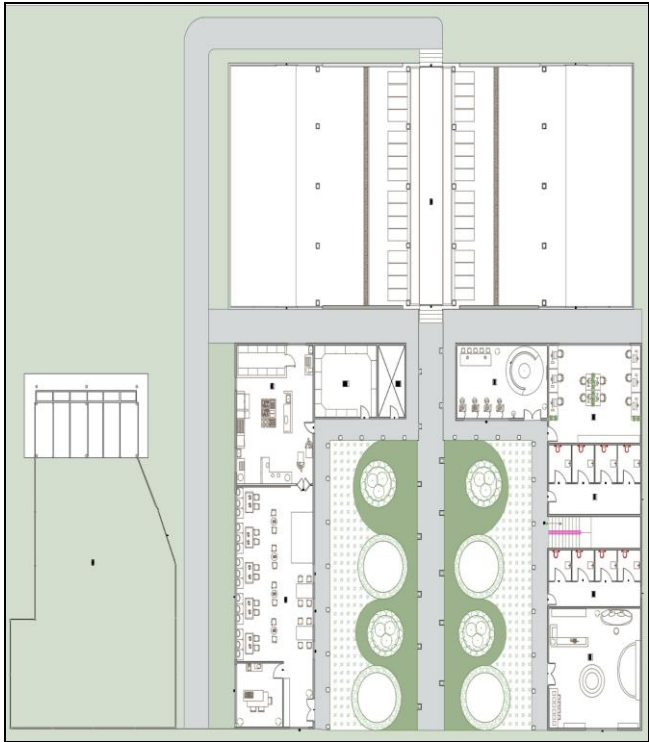


Fig 1: Plan-source Author

Elevation

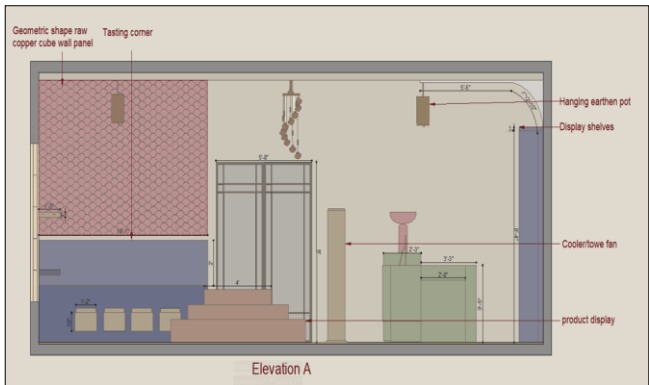


Fig 2: Elevation A- source Author

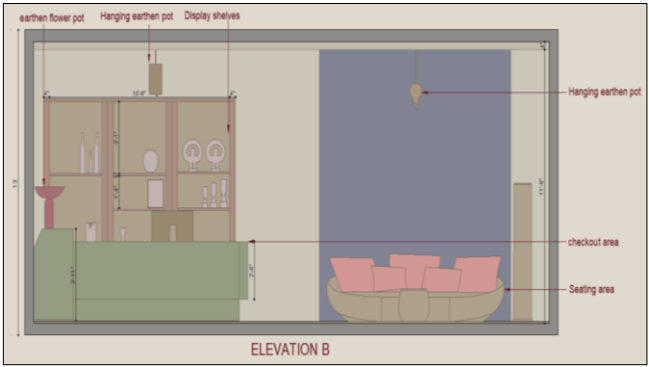


Fig 3: Elevation B- source Author

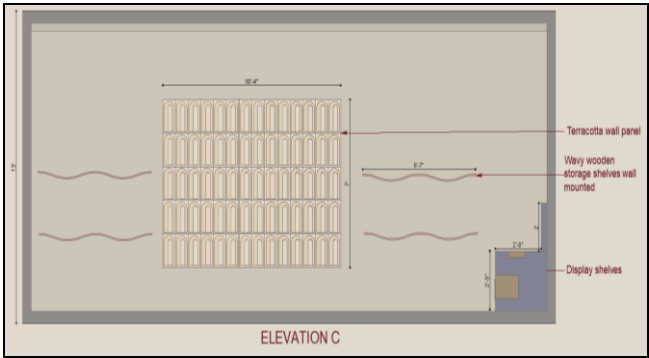


Fig 4: Elevation C- source Author

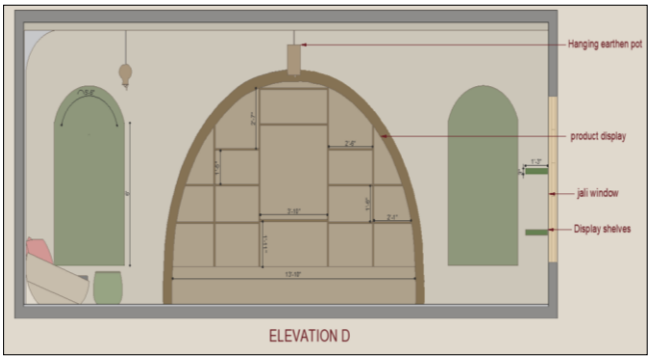


Fig 5: Elevation D- source Author



Fig 6: Elevation- source Author



Fig 7: Gokshira Cafe



Fig 8: Elevation- source Author



Fig 9: Gokala Sanchay Workshop

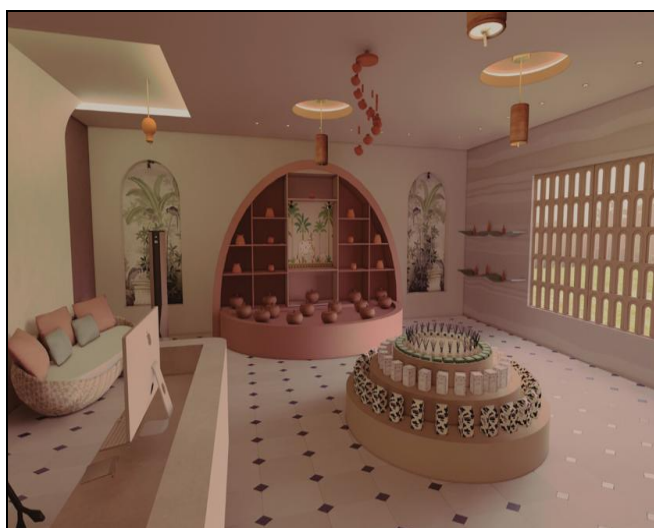


Fig 10: Elevation- source Author



Fig 11: Gokriti essence store

Conclusion

The project *Echoes of Earth* successfully explores the integration of modern sustainability with ancient Indian wisdom through the concept of Panchgavya. The design uses cow-derived materials like Aura plaster, Vedic dung-based Gopika tiles, Gaumaya paints, and milk fabric from Suvetah, demonstrating how traditional resources can be adapted innovatively in contemporary interior design. Each space within the project-Gokshira Café, Gokritiessence Store, Gaumaya Barn, and Govatsa-reflects an immersive, multisensory experience aligning with the theme *Pause*, encouraging visitors to reconnect with nature and slow down. The outcome highlights a new way of eco-conscious design thinking that is rooted in cultural relevance, sustainability, and sensory wellbeing. This study will benefit society by promoting sustainable architecture practices and inspiring the revival of traditional ecological knowledge in modern spatial design.

References

1. Kellert SR, Wilson EO. Biophilia. *Human Ecology*. 2008;2008:462-466.
2. Echo-Hawk RC. Ancient history in the New World: integrating oral traditions and the archaeological record in deep time. *American antiquity*. 2000 Apr;65(2):267-290.
3. Katsilometes BK. Wonder and Wisdom: Wandering through Space and Time. *Psychological Perspectives*. 2023;66(4):497-520.
4. Brague R. The wisdom of the world: The human experience of the universe in western thought. University of Chicago Press; c2003.
5. Elder J. Imagining the earth: Poetry and the vision of nature. University of Georgia Press; c1996.

Creative Commons (CC) License

This article is an open access article distributed under the terms and conditions of the Creative Commons Attribution (CC BY 4.0) license. This license permits unrestricted use, distribution, and reproduction in any medium, provided the original author and source are credited.